

IMMEDIATE ATTENTION NEEDED



YOUNG'S®
Landscape Management, Inc.

SPOTTED LANTERNFLY

in Pennsylvania and New Jersey

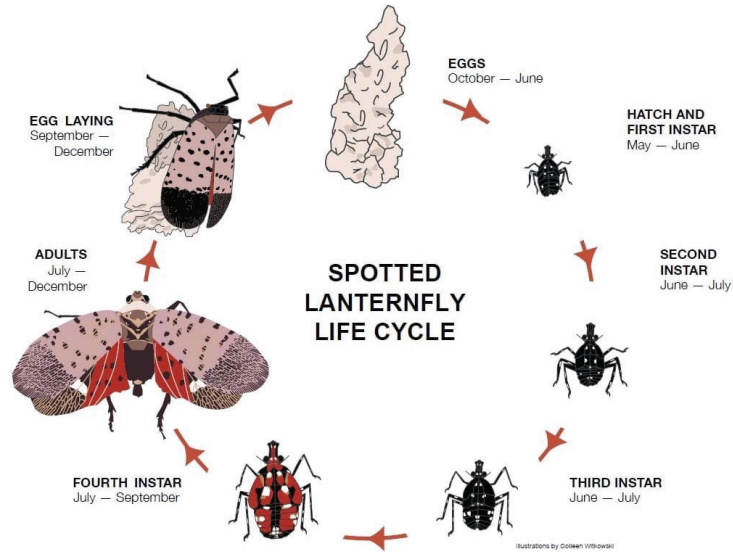


September 2014, the spotted lanternfly was detected in Berks County, Pennsylvania, and has vastly spread throughout several counties in PA and is now here in New Jersey.

The spotted lanternfly is a significant nuisance and is extremely dangerous to our country's crops and trees. The adults will die off during December, but they will have left their egg masses on 70 different plant species, including fruit & ornamental trees, woody trees, vegetable & herb plants. This fly strongly prefers the invasive "Tree of Heaven." Each lanternfly can lay hundreds of eggs doubling their population the following spring and continue their spread.

Each spring, the egg masses will hatch, and the life cycle will begin all over again.

- **EARLY NYMPH** stage are found in **LATE APRIL - JULY**
- **LATE NYMPH** stage are found in **JULY - SEPTEMBER**
- **ADULT** stage are found in **JULY - DECEMBER**
- **EGG MASSES** are found in **SEPTEMBER – DECEMBER**



SPOTTED LANTERNFLY TREATMENT PROGRAM

Our **5-APPLICATION PROGRAM** will protect the trees on your property.

- Starting in early spring we will perform a series of treatments every 6 – 8 weeks. The treatments will consist of soil drenching, trunk, branch and foliage sprays to address the nymph stage through the adult stage.

SEE IT, REPORT IT!



Spotted Lanternfly

CALL NOW TO SCHEDULE A FREE CONSULTATION AND SEE WHAT WE CAN DO FOR YOU!

DON'T TRUST YOUR LANDSCAPE TO JUST ANYONE.

609-654-5441 • 856-303-2828 • youngslandscape.com